

+39 3283792917

info@verdeabitare.it

## REF 606 Village House with Panoramic Views for Sale



Property lot size	500 m <sup>2</sup>
Property size	240 m <sup>2</sup>
Beds	3
Baths	2

Caratteristiche: attic, balcony, cellar

### +info

Situated in a panoramic location, this well-built village house is arranged over three levels and includes a vaulted cellar in the basement. The property is semi-detached (free on two sides) and benefits from a small rear plot of approximately 450 sq m.

The house is structurally sound and requires only minor modernisation.

Accommodation comprises:

Ground floor: entrance hall with staircase, dining room with kitchenette, living room, bathroom, and a spacious garage/storage area.

Basement: traditional vaulted cellar.

First floor: three bedrooms, bathroom, landing, and a large former hayloft currently used as storage.

Second floor: one additional bedroom and an attic/storage room with exposed roof structure.

The upper floors enjoy beautiful open panoramic views of the surrounding countryside.

The property is equipped with natural gas central heating.

MUST SEE!

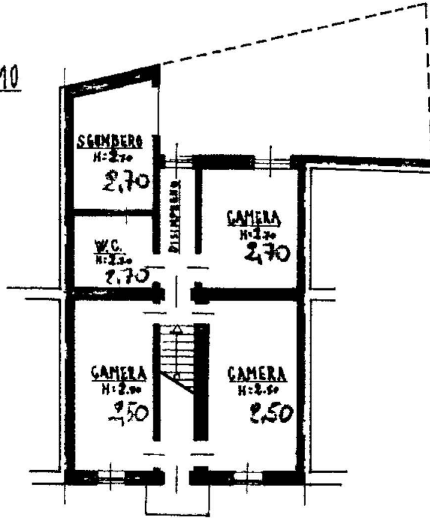
Property cost

€ 55.000

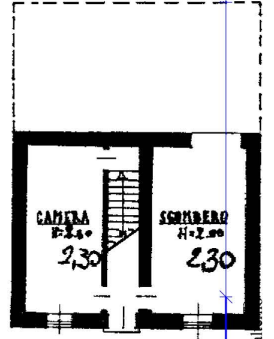
Agent commission

4% plus VAT

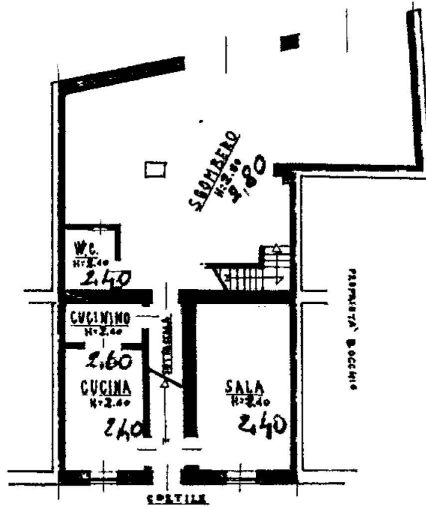
PIANTA PIANO PRIMO



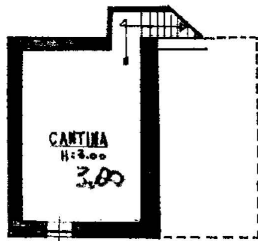
PIANTA PIANO SECONDO



PIANTA PIANO TERRA



PIANTA PIANO INTERRATO



ORIENTAMENTO



SCALA DI 1:200

