

+39 3283792917

info@verdeabitare.it

REF 605 Traditional Piedmont House with Stunning Panoramic Views



Property lot size	1800 m ²
Property size	250 m ²
Beds	2
Baths	4

Features: attic, balcony, basement, cellar, terrace

+info

Set in an exceptionally panoramic position and just a short distance from the village centre, this traditional Piedmontese farmhouse is offered for sale. The property comprises a main residence arranged over three levels, in excellent condition and ready for immediate occupancy, together with a separate outbuilding located opposite the house.

The outbuilding currently includes two storage or workshop rooms, a hallway and bathroom facilities, as well as a covered portico at the rear and a large former hayloft on the upper floor, offering excellent potential for conversion and expansion of the living accommodation.

The main house comprises:

- Entrance hall with spacious staircase
- Living room
- Kitchen
- Terrace
- Bathroom on the mezzanine level
- Two generous double bedrooms on the first floor

The basement level features a large vaulted cellar, ideal for conversion into a wine cellar, entertainment room, or traditional taverna.

The rooms are spacious, bright and well proportioned throughout.

Pellet-fired heating.

A property with great character, versatility and development potential in a highly desirable panoramic setting.

Viewing is highly recommended.

Property cost

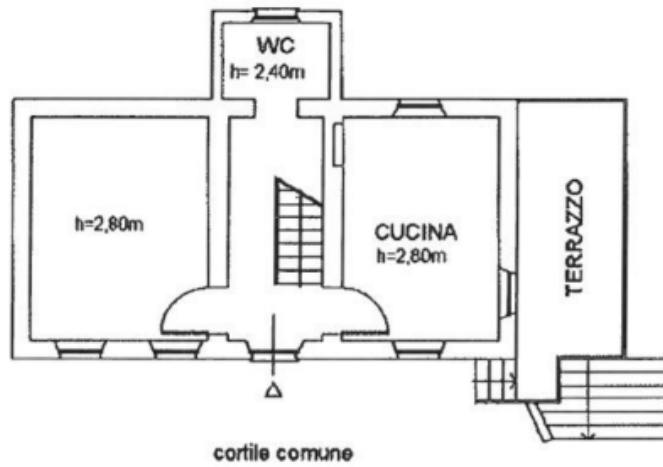
€ 425.000

Agent commission

4% plus VAT

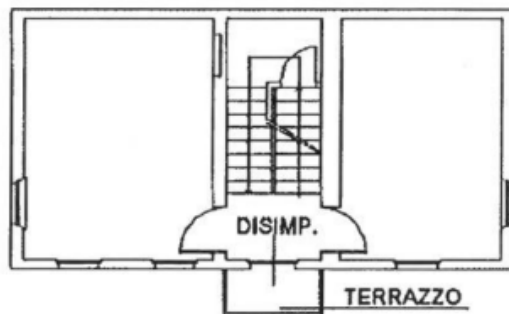


PIANO TERRENO

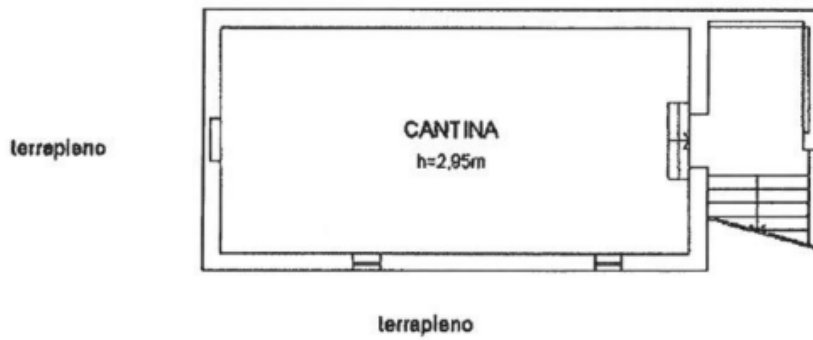


PIANO PRIMO

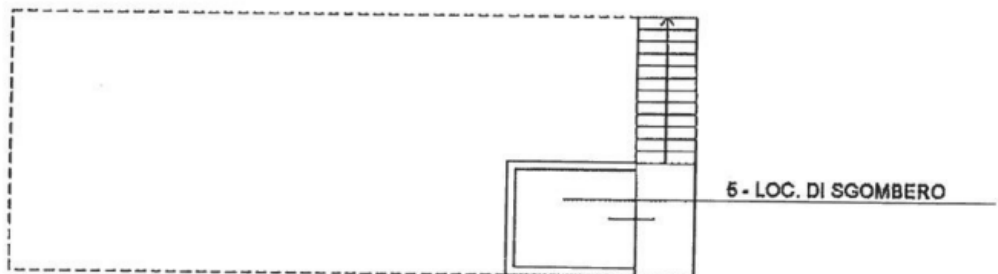
h= 2,80m



PIANO PRIMO SOTTERRANEO



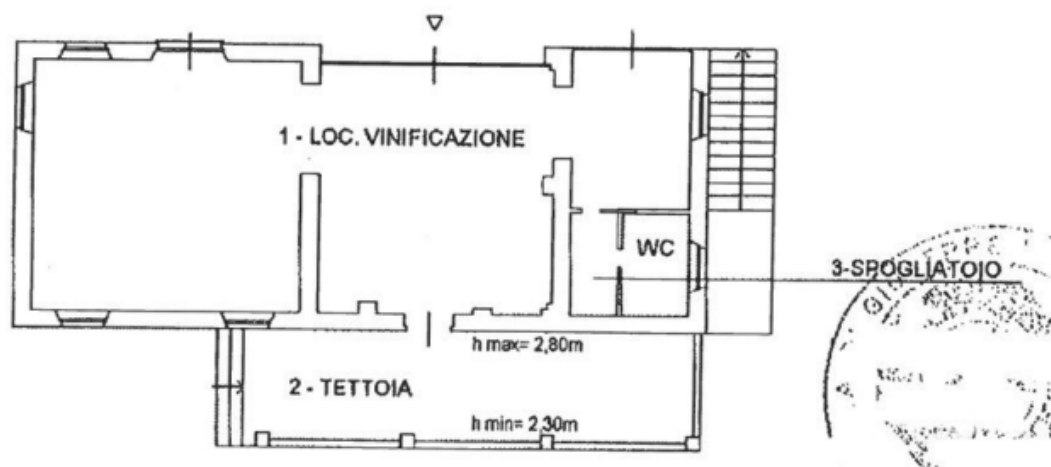
PIANO PRIMO SOTTERRANEO h= 1,80m



PIANO TERRENO

h= 3,00m

corte comune



PIANO PRIMO

