

+39 3283792917

info@verdeabitare.it

## REF 595 A traditional Piedmontese home in a central location with views



Property lot size	490 m <sup>2</sup>
Property size	162 m <sup>2</sup>
Camere	7
Bagni	1

Amenities: balcony, attic, basement, cellar

### More infos

Centrally located, this traditional Piedmontese L-shaped property features an underground vaulted cellar and requires renovation, offering excellent potential, including as a holiday home thanks to the stunning valley views.

The main living area on the ground floor comprises a kitchen and living room. The first floor offers two bedrooms, one with a balcony, while the attic level contains two charming loft-style bedrooms with terracotta flooring.

On the valley-facing side, the property includes a covered porch, a small former chicken coop, a stable, and a storage area. An additional cellar is located in the semi-basement.

Above the stable and storage area is a spacious hayloft, which could be converted into residential space or, alternatively, into a spectacular panoramic terrace.

The roofs are in good condition. The courtyard also features a small covered porch.

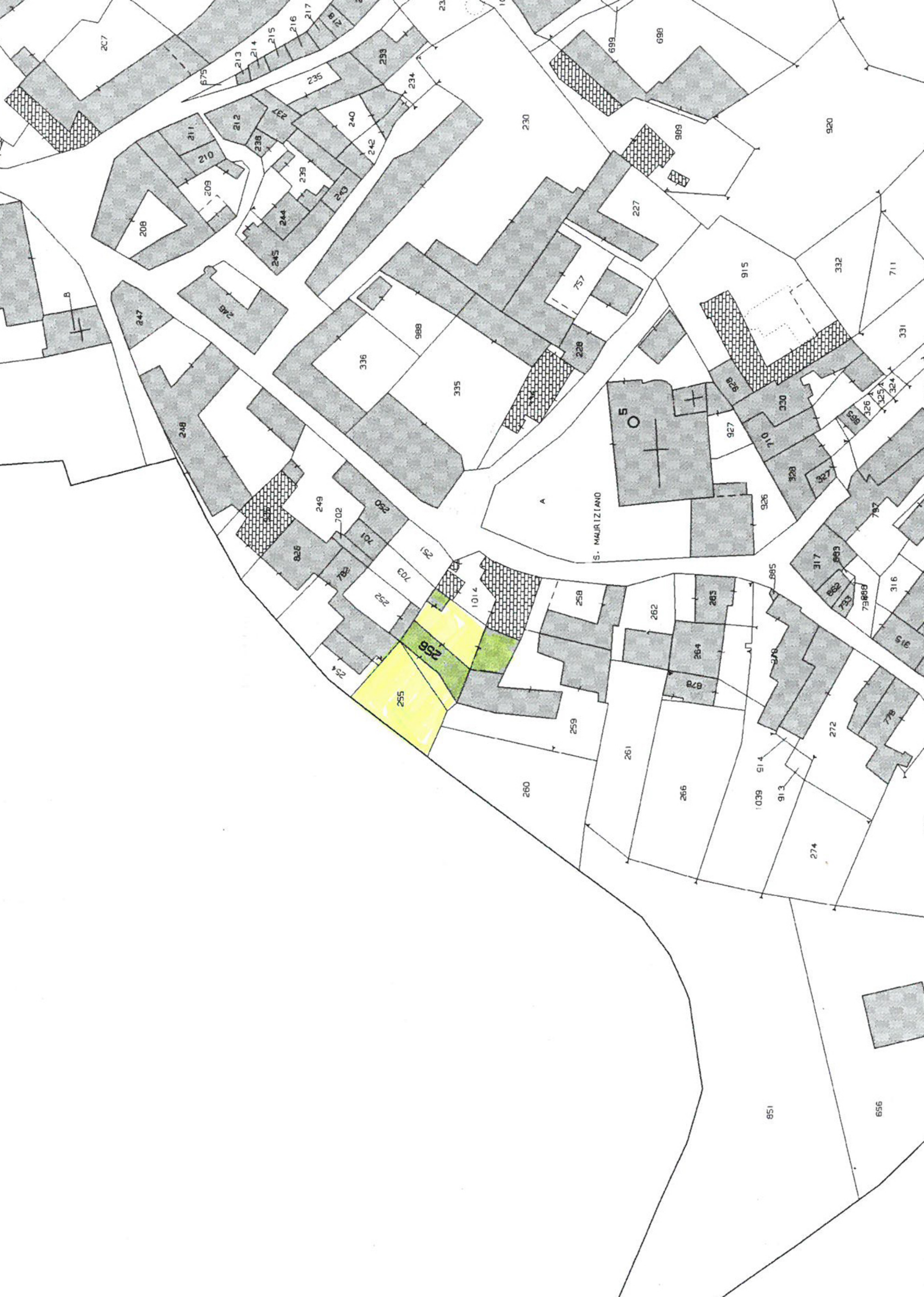
Solid structure and well-maintained roofing. Suitable as an investment opportunity (Airbnb, holiday rentals, etc.).

Property cost

€ 45.000

Agent commission

4% plus VAT



S. MAURIZIANO

A

255

256

B

851

656

207

213

212

238

244

245

208

211

210

237

240

242

243

247

248

249

336

988

335

757

228

227

915

920

711

331

248

249

702

250

701

703

251

252

1014

258

262

263

264

885

317

883

316

315

253

254

255

256

260

259

261

266

265

1039

514

913

274

272

776

882

884

886

797

326

325

324

323

322

321

320

319

318

317

316

315

314

313

312

311

310

309

308

307

306

305

304

303

302

301

300

299

298

297

296

295

294

293

292

291

290

289

288

287

286

285

284

283

282

281

280

279

278

277

276

275

274

273

272

271

270

269

268

267

266

265

264

263

262

261

260

259

258

257

256

255

254

253

252

251

250

249

248

247

246

245

244

243

242

241

240

239

238

237

236

235

234

233

232

231

230

229

228

227

226

225

224

223

222

221

220

219

218

217

216

215

214

213

212

211

210

209

208

207

206

205

204

203

202

201

200

199

198

197

196

195

194

193

192

191

190

189

188

187

186

185

184

183

182

181

180

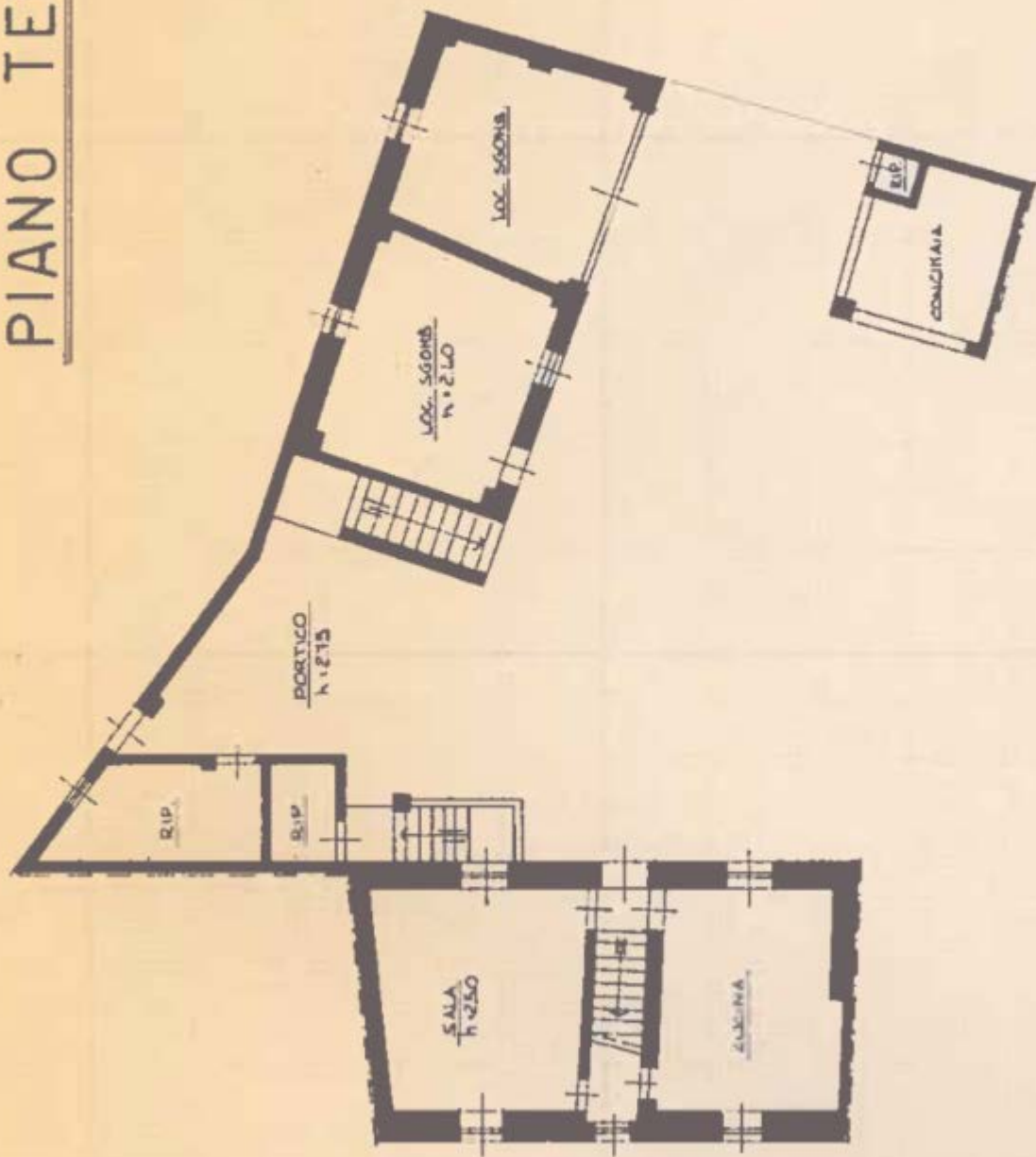
179

178

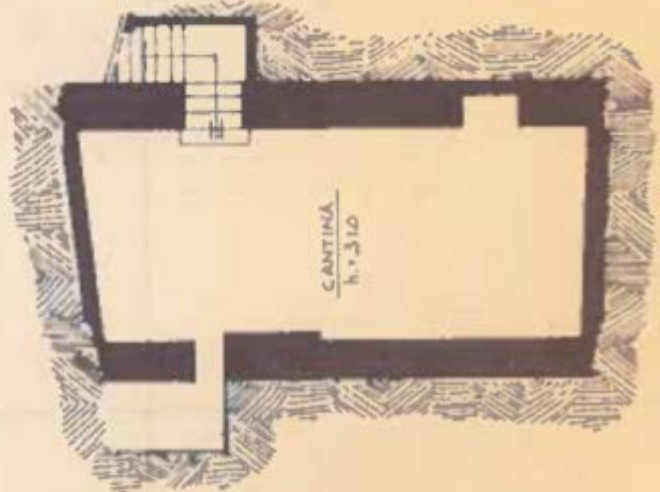
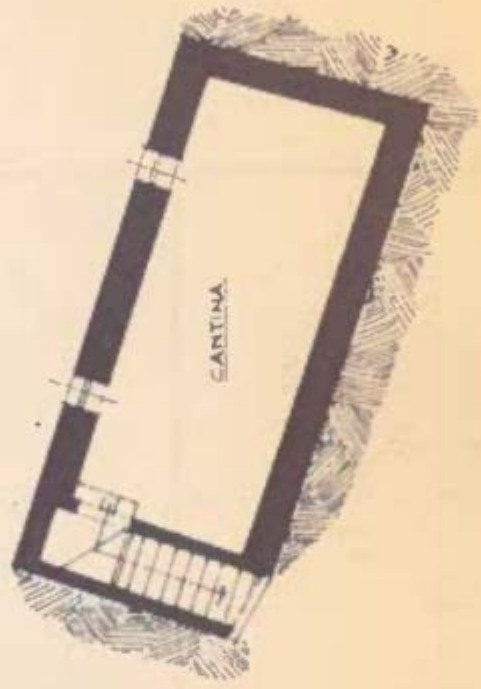
177

176

# PIANO TERRA



PIANO INTERRATO



# PIANO SECONDO

