

+39 3283792917

info@verdeabitare.it

REF 412 a cosy 2 bedroom country house, with small courtyard, nice views



Property Lot Size	150 m ²
Property Size	128 m ²
Rooms	5
Bedrooms	2
Bathrooms	3

Other characteristics:
balcony.

More infos

The perfect holiday home: a 2/3 bedroom property in a lovely location, semidetached, with open views onto the rolling hills and vineyards, in excellent shape, only some modernization jobs are welcome.

Ground floor: entrance and stone staircase, a lovely kitchen with a hidden kitchenette with original fireplace, a lounge (that could be used as third bedroom), a cozy living room with fireplace. Upstairs: two bedrooms and a bathroom. Outside there is a lovely small courtyard with a patio for "alfresco" dining

MUST SEE!

Good value for money

Property cost

€ 62.000

Agent commission

4% plus VAT

+39 3283792917

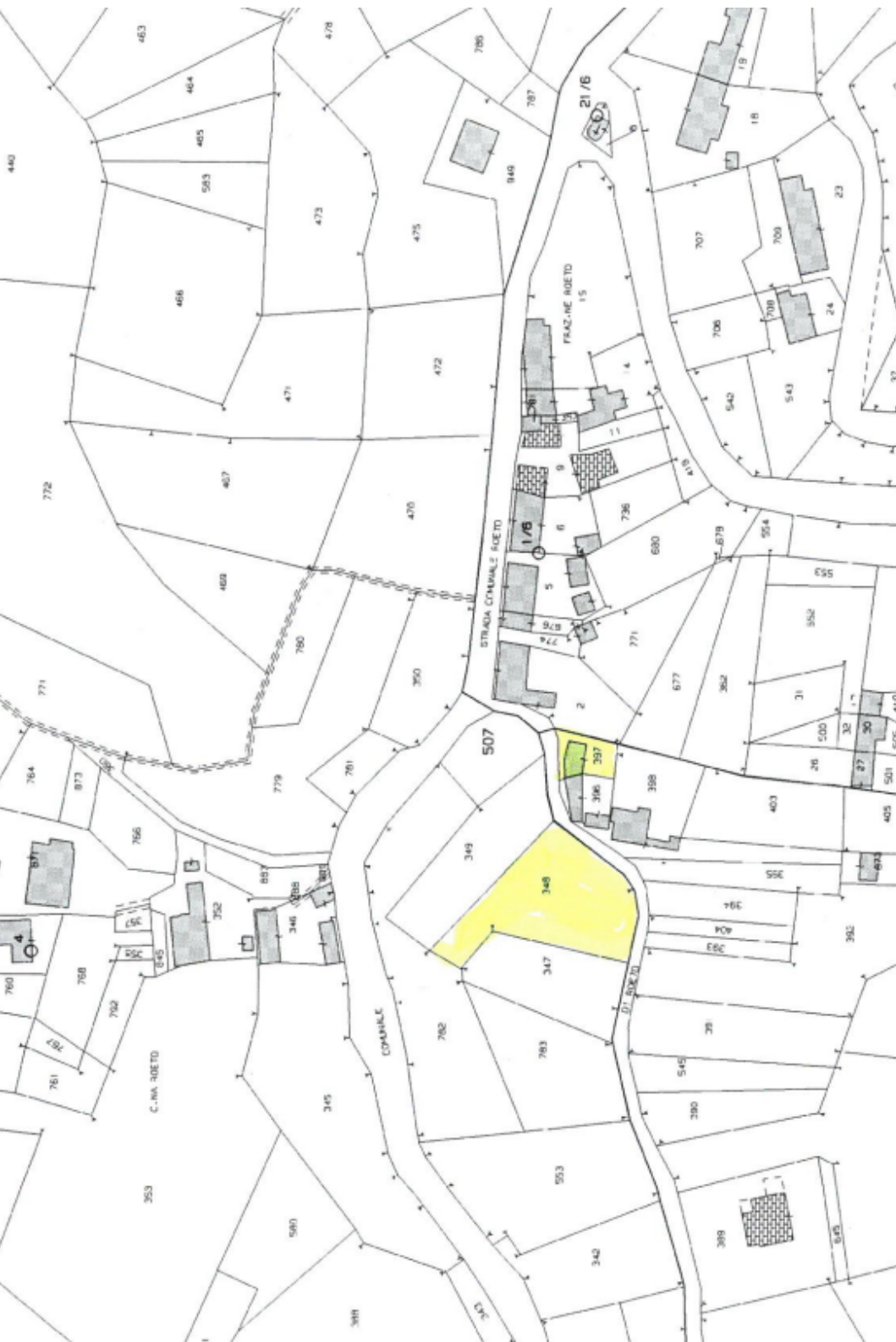
info@verdeabitare.it

Cadastral map and floor plan

Address:

14047 Mombercelli AT

Latitude and Longitude: 44.82245402968409 | 8.292438424464468

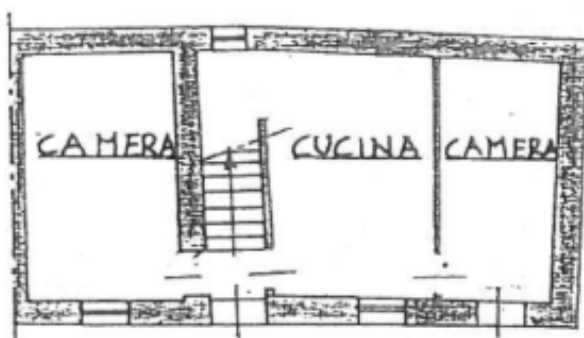


PIANO TERRA

N. HT. 280

STESSA PROP.

PROP
GAGLIARDI
GIUSEPPE



STESSA PROP.

CORTILE

PIANO PRIMO

N. HT. 220

