

+39 3283792917

info@verdeabitare.it

Ref 560 A luxury country estate with garden and pool



Property Size	600 m ²
Property Lot Size	4000 m ²
Bedrooms	6
Rooms	16

Amenities:
Balcony, pool, terrace

More infos

A magnificent dwelling standing in a 4,000 sq mt plot of garden, with an imposing entrance, located in one of the most panoramic spot of the region.

The property comprises the main accommodation, a guest apartment and another building with sauna and showers facilities for the swimming pool area, plus an additional small guest accommodation on first floor.

The main house is composed of a spacious garage on ground floor, a terraced garden facing the main entrance, with an imposing wooden carved staircase, on the lateral wing a vaulted lounge, a spacious lounge in the ex cellar area, a billiard room, a bathroom and a utility room, plus a boiler room. Upstairs a great living room offers a magnificent views of the panorama from its big windows, and a big terrace makes you enjoy the rolling hills of scenic Monferrato.

From the living room you can reach a big kitchen, with a working fireplace. A guest bedroom, a bathroom and two more rooms are on this floor. A stone staircase leads to the second floor, with two bedrooms, a bathroom, a wardrobe room, and a spacious ensuite.

The two guest accommodations have a separate entrance and are composed each of a kitchen/living room, a bedroom and bathroom.

There is also a swimming pool, with heated water if needed. In front of the swimming pool there is a patio and also a sauna and showers facilities. The property is a semi-detached house, but full privacy is guaranteed thanks to the high fences and walls at the boundaries. The general conditions are excellent, just small upgrading/redecorating jobs needed.

Book now your viewing tour, you will be astonished by this charming estate!

Property cost

€ 600.000

Agent commission

3% plus VAT

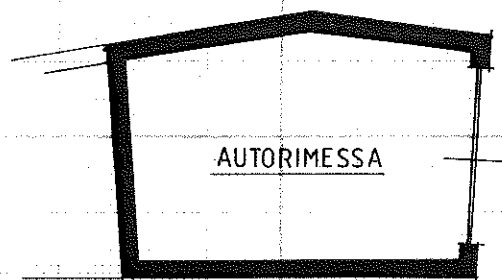


PIANO TERRENO

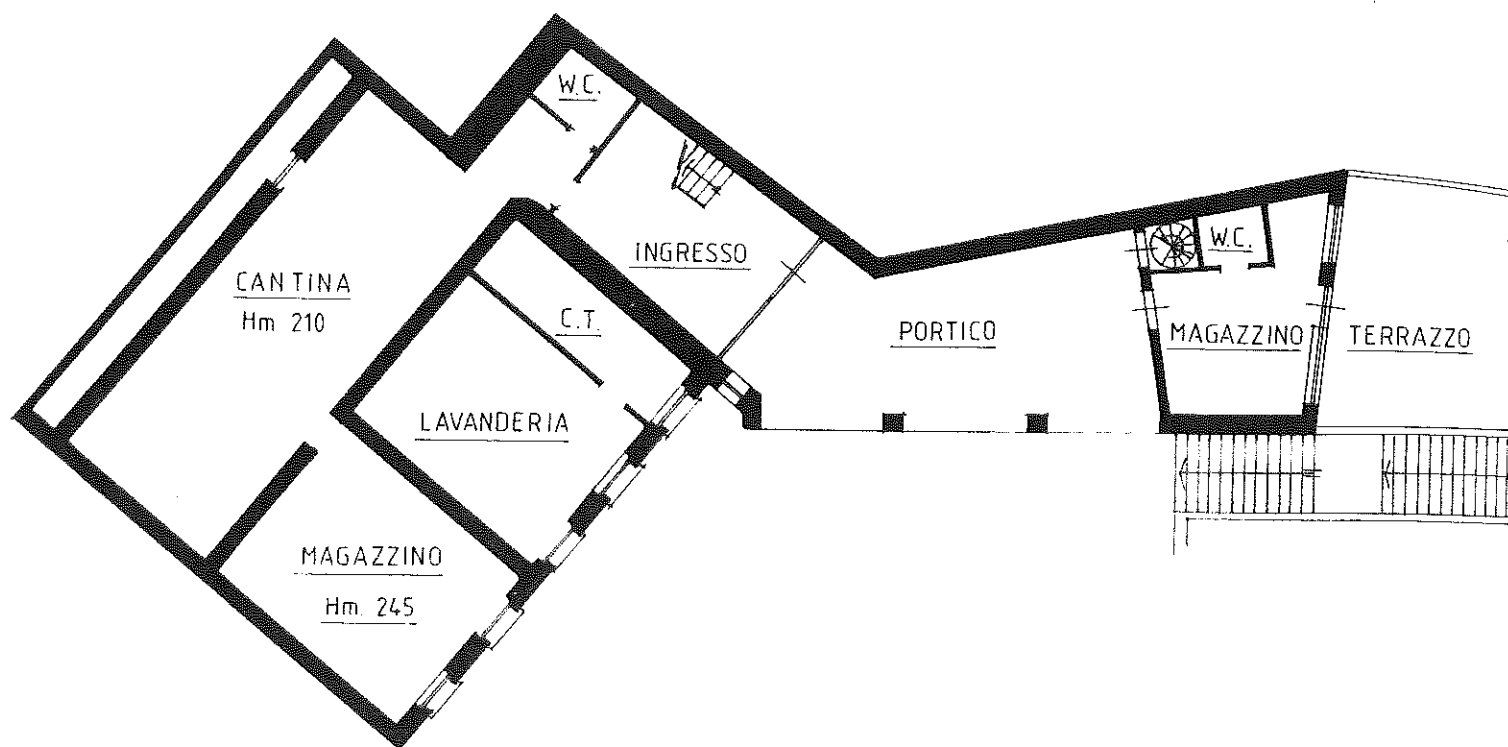


DEPOSITO

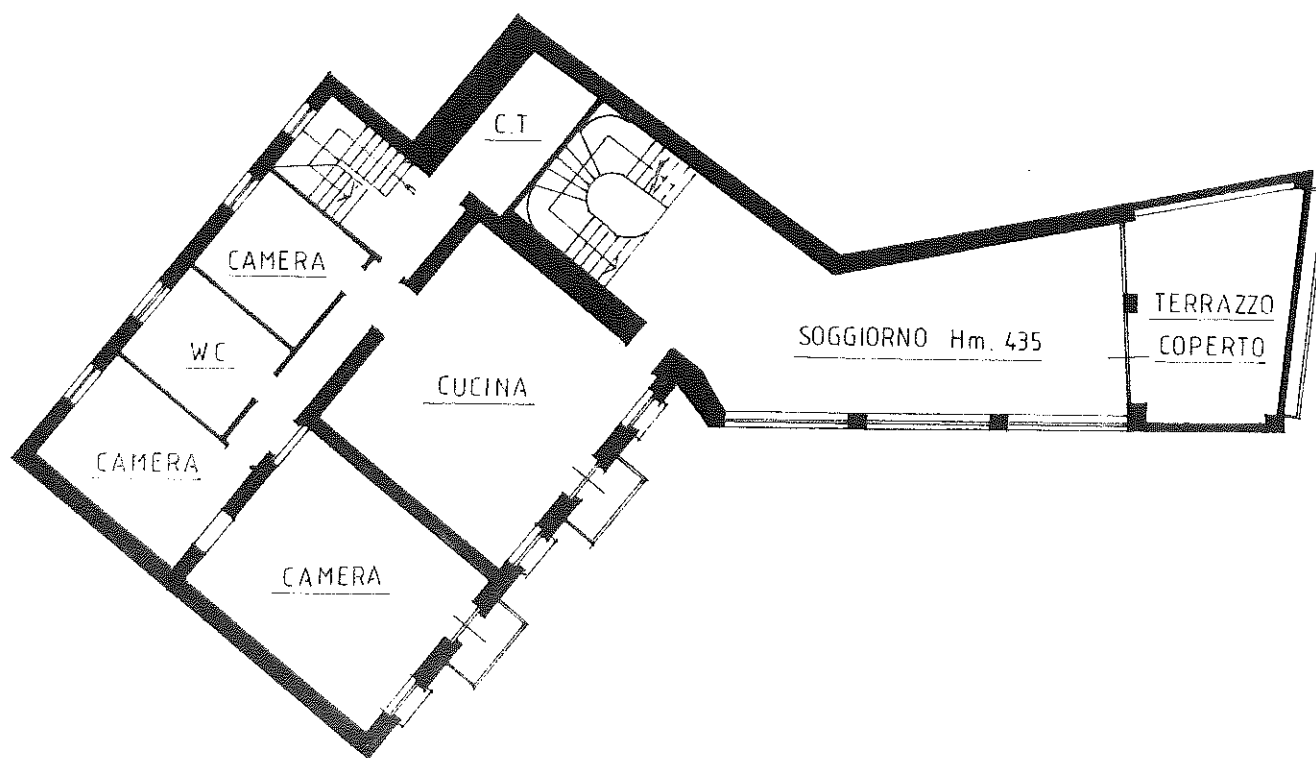
PIANO SEMINTERRATO H. 320



PIANO TERRENO H. 260



PIANO PRIMO H. 270



PIANO SECONDO H. 300

