

+39 3283792917

info@verdeabitare.it

REF 522 A Charming Panoramic Property with Private Access



Property size	200 m ²
Property lot size	10000 m ²
Bedrooms	4
Bathrooms	3

Amenities:
Balcony, cellar

More informations

In a beautiful, peaceful location with panoramic views and private paved access, this renovated and well maintained independent stone house offers an ideal blend of privacy and charm, complete with approximately one hectare of gardens and land.

Property Overview:

Set over two floors, this classic stone cottage exudes rustic charm whilst offering all modern conveniences.

Ground floor: Entrance into a spacious living room, a kitchen with cozy fireplace, an additional room, a spacious storage/boiler room, a small utility room and a unique stone cellar with authentic character.

Upper floor: A hallway connects two spacious bedrooms, each with its own bathroom, two further bedrooms and a large family bathroom.

A must see for those looking for a blend of natural beauty and practical living spaces!

Property cost

€ 269.000

Agent commission

3% plus VAT

+39 3283792917

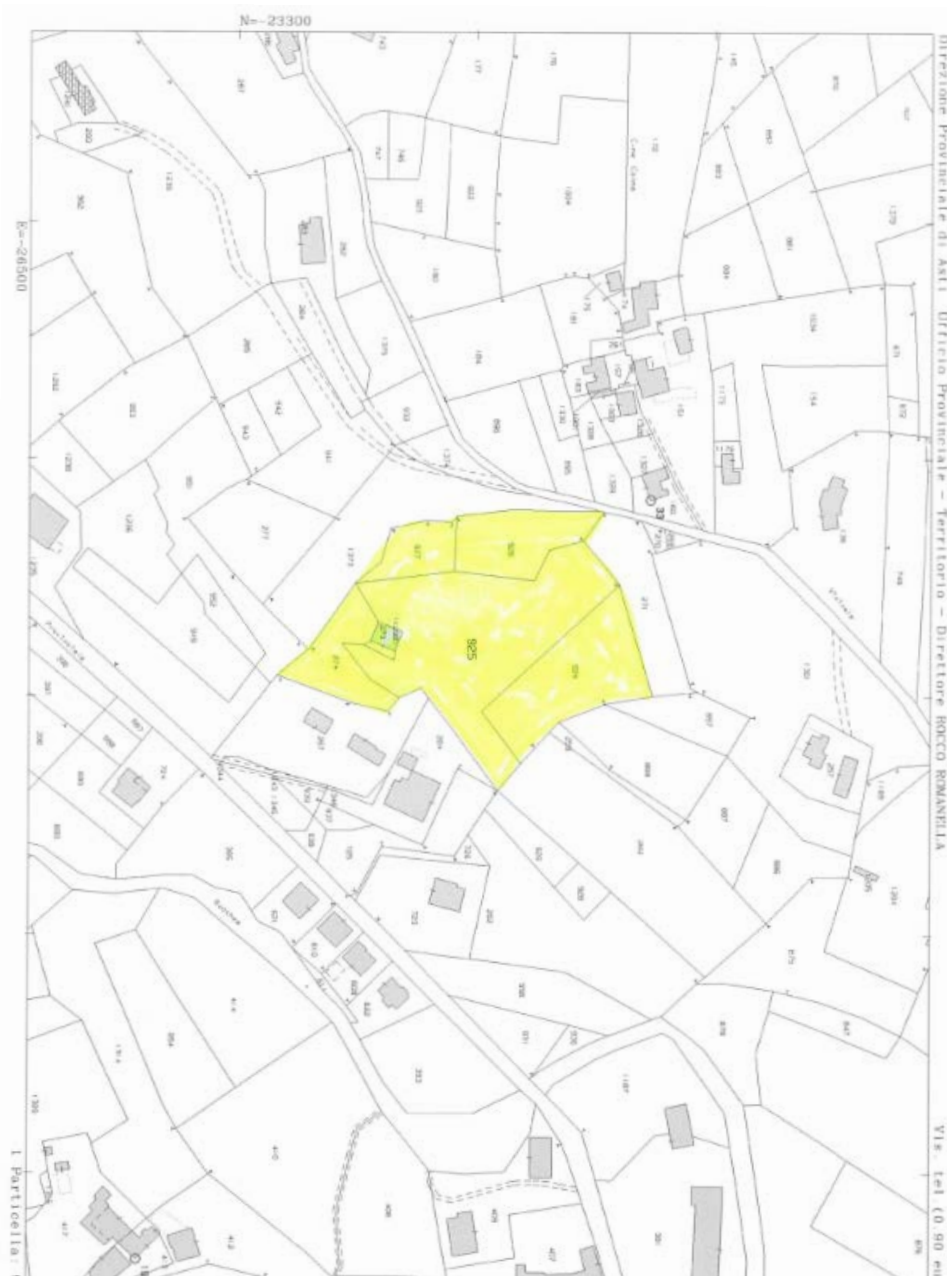
info@verdeabitare.it

Cadastral map and plan

Address:

Canelli 14053 AT

Latitude and Longitude: 44.718698601123826, 8.291485873188558



+39 3283792917

info@verdeabitare.it

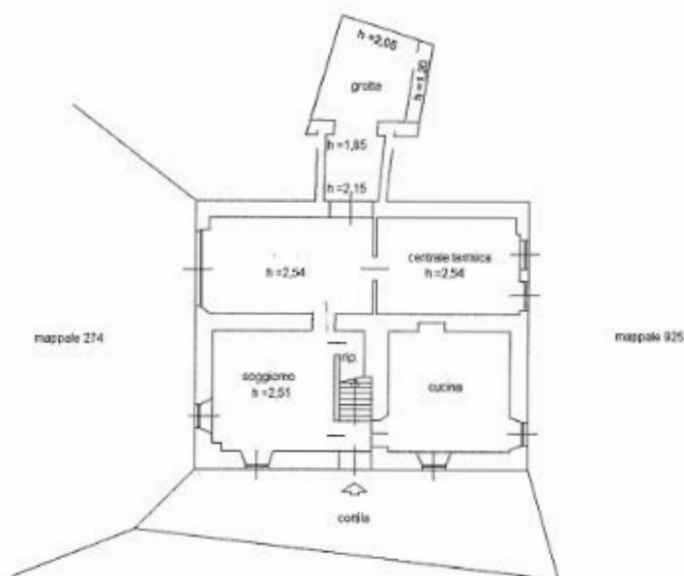
Cadastral map and plan

Address:

Canelli 14053 AT

Latitude and Longitude: 44.718698601123826, 8.291485873188558

PIANO TERRENO



PIANO PRIMO

