

+39 3283792917

info@verdeabitare.it

REF 540 A classic Piedmontese country house with garden and land



Property lot size	4500 m ²
Property size	250 m ²
Beds	2
Rooms	7

Amenities: attic, balcony, cellar.

More infos

Nestled in a beautiful, open and panoramic setting on the edge of the village — just a short walk from the center — this charming, traditional Piedmontese house is now available for sale.

The property is in excellent overall condition and is ready to move into. It has a spacious, level garden and additional agricultural land with a total area of approx. 4,500 m².

The house is spread over three levels:

Lower level: a spacious vaulted cellar, perfect for conversion into a cozy, tavern-style entertaining space, easily accessible from the courtyard.

Ground floor: An inviting entrance hall with classic stone staircase, a bright kitchen, a living room with fireplace, a separate living room with a second entrance, a storage room and a garage.

Upper floor: Here there are two comfortable bedrooms, a bathroom and a balcony with picturesque views. On this floor level there is a former hayloft that could be converted into an additional bedroom.

Other highlights include a well-maintained roof, upgraded utilities (a new boiler is required, but a methane gas connection is already in place) and double-glazed windows for greater energy efficiency.

A must see property offering authentic charm, privacy and comfort in a stunning rural setting!

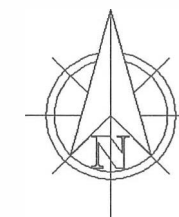
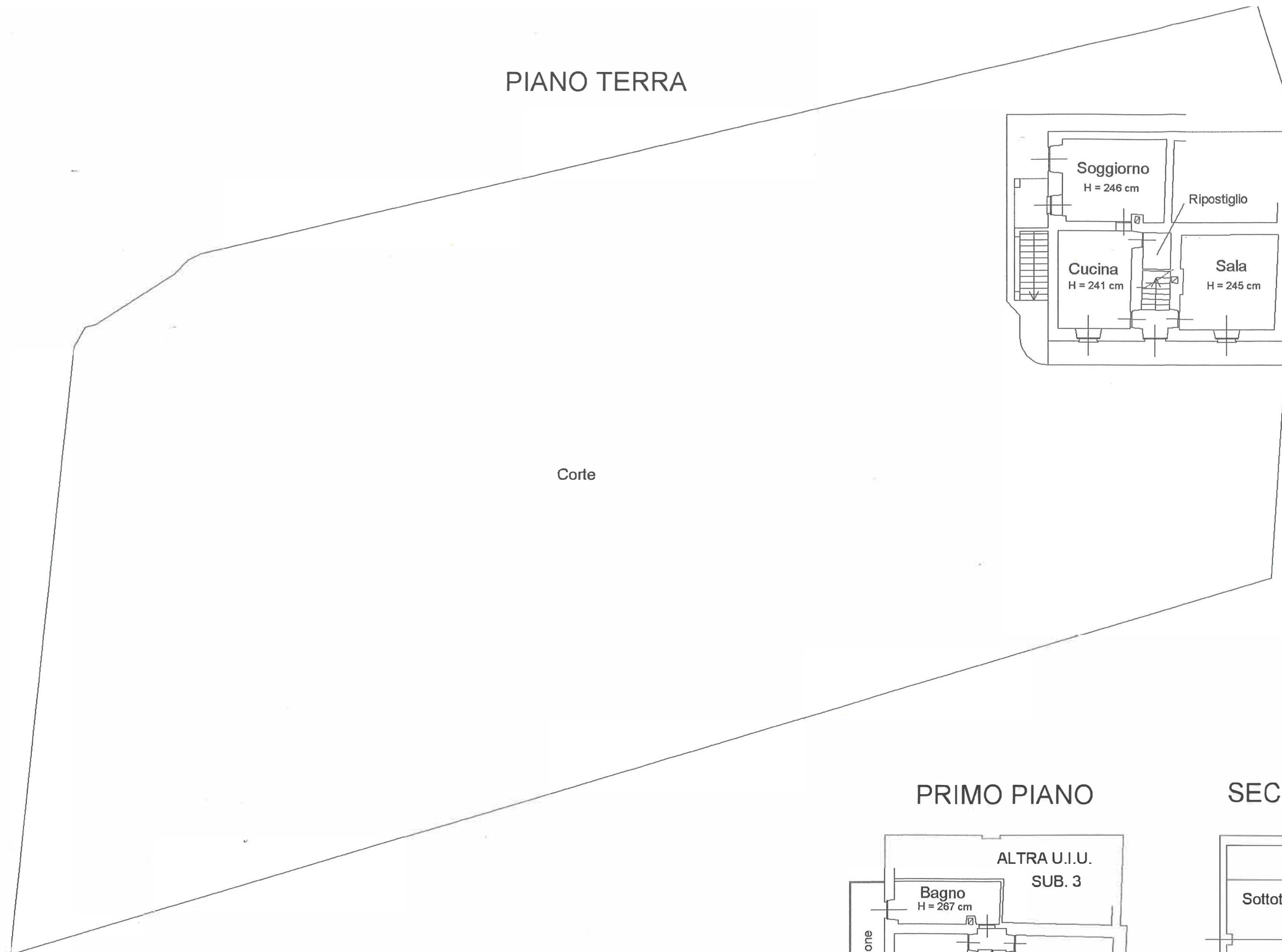
Property cost

€ 240.000

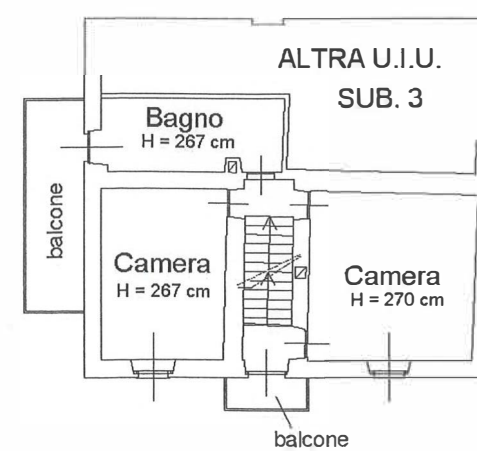
Agent commission

3% plus VVAT

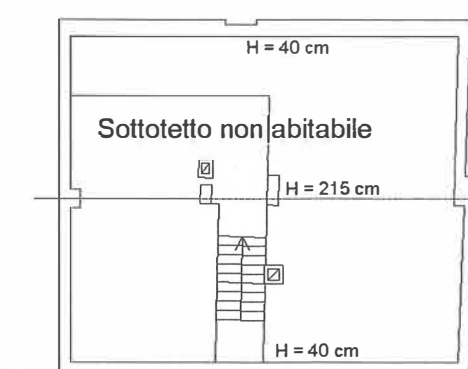
PIANO TERRA



PRIMO PIANO



SECONDO PIANO

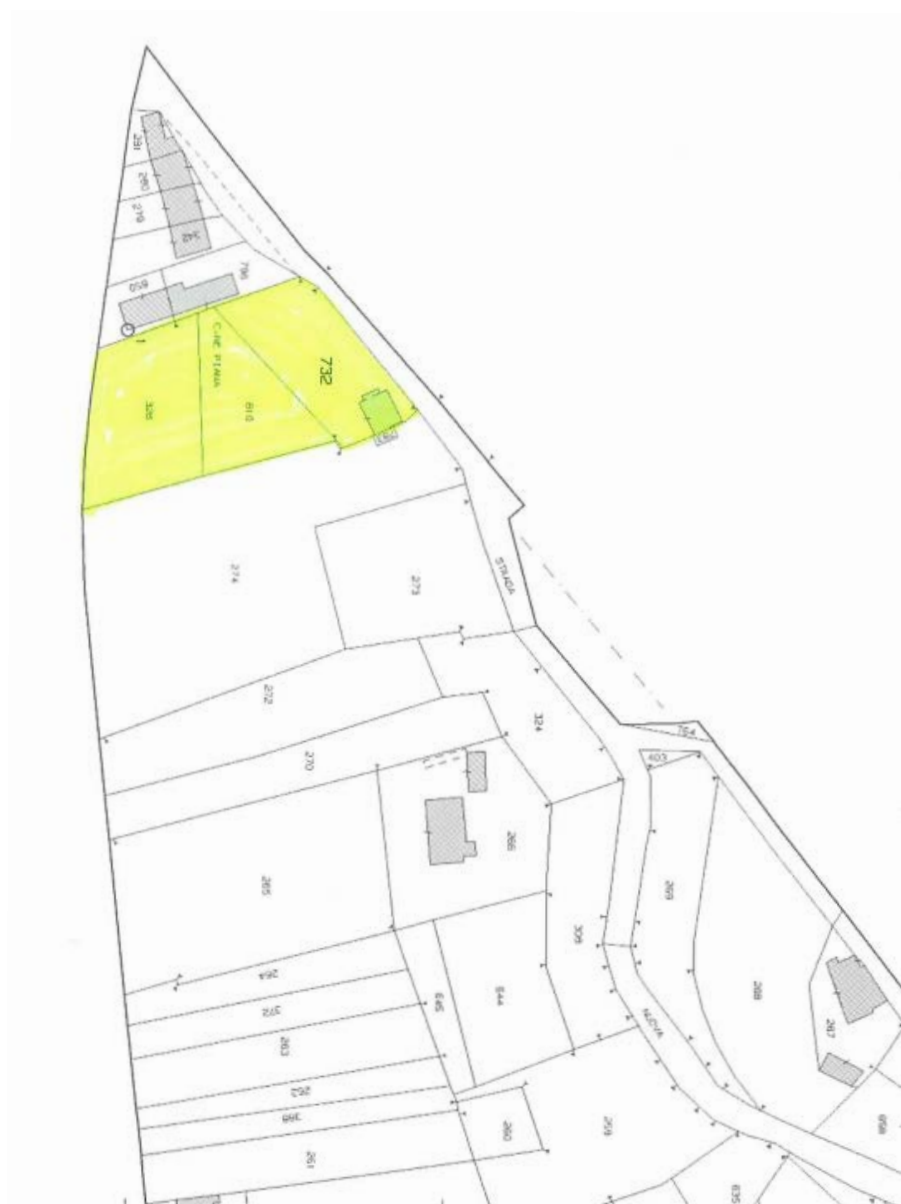


+39 3283792917

info@verdeabitare.it

Address: Mombercelli 14047 AT

Latitude & Longitude: 44.82301703149821, 8.29299631246216



+39 3283792917

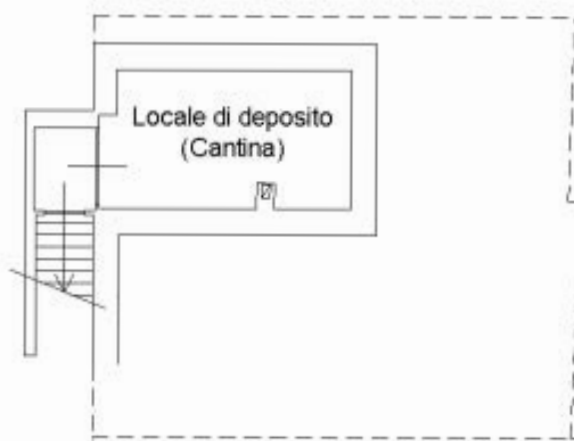
info@verdeabitare.it

Address: Mombercelli 14047 AT

Latitude & Longitude: 44.82301703149821, 8.29299631246216

PIANO SOTTERRANEO

H media = 215 cm



+39 3283792917

info@verdeabitare.it

Address: Mombercelli 14047 AT

Latitude & Longitude: 44.82301703149821, 8.29299631246216

