

+39 3283792917

info@verdeabitare.it

REF 536 A panoramic villa with garden and land



Property size	400 m ²
Property lot size	4600 m ²
Bedrooms	5
Bathrooms	4

Amenities: balcony,
terrace

More infos

Stunning panoramic villa with privacy – ideal for families or for running a holiday business

In a beautiful panoramic location with lots of privacy, this spacious villa is for sale with a large garden and a plot of approx. 4,600 m² with two driveways. Perfect for two families or business activities.

The villa is spread over three floors:

Ground floor: entrance hall, hallway, living room, kitchen, two bedrooms, two bathrooms, various technical rooms and a boiler room.

Upper floor: entrance hall, large living area, kitchen, a panoramic terrace, three bedrooms, two bathrooms and a balcony.

Top floor: One bedroom and a storage room.

The property also has a spacious carport in the inner courtyard.

The interiors are in excellent condition and a brand new photovoltaic system has just been installed.

Be sure to visit!

Property cost

€620.000

Agent commission

3% plus VAT

+39 3283792917

info@verdeabitare.it

Cadastral map & plan

Address:

14049 Mombercelli AT

Latitude & longitude: 44.818710169447 | 8.292309709666128



+39 3283792917

info@verdeabitare.it

Cadastral map & plan

Address:

14049 Mombercelli AT

Latitude & longitude: 44.818710169447 | 8.292309709666128



PIANTA PIANO TERRA
H = 300 CM



PIANTA PIANO PRIMO
H = 200 CM

+39 3283792917

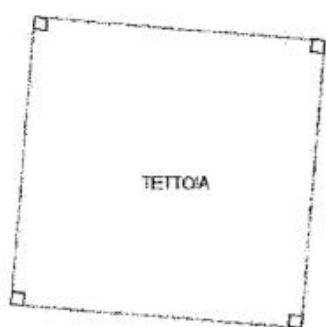
info@verdeabitare.it

Cadastral map & plan

Address:

14049 Mombercelli AT

Latitude & longitude: 44.818710169447 | 8.292309709666128



PIANTA PIANO TERRENO
H. 4,60 - 3,35 mt

+39 3283792917

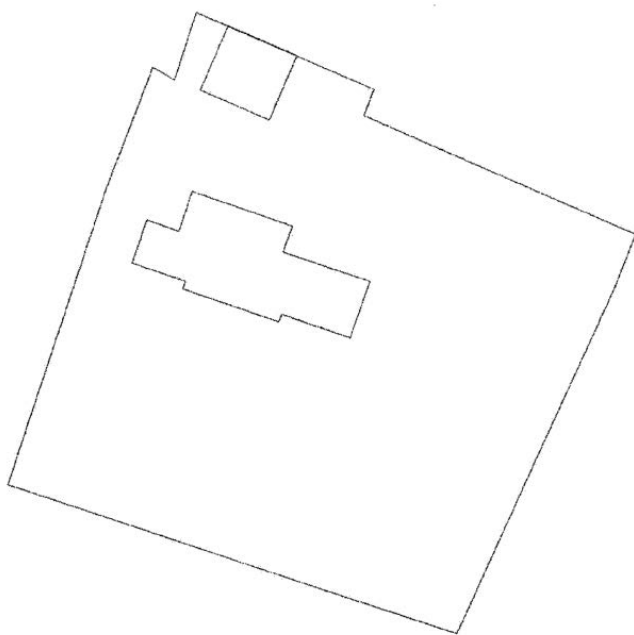
info@verdeabitare.it

Cadastral map & plan

Address:

14049 Mombercelli AT

Latitude & longitude: 44.818710169447 | 8.292309709666128



PIANTA PIANO TERRA