

+39 3283792917

info@verdeabitare.it

REF 517 A luxury stone Langa property with pool



Property lot size	36000 m ²
Property size	400 m ²
Rooms	10
Beds	4
Bathroom	3

Amenities: basement, cellar, pool, terrace

More infos

This exceptional luxury villa is set on 3.6 hectares of landscaped grounds with breathtaking panoramic views. Accessed via a private driveway, it blends modern architectural elegance with the charm of traditional stone houses. Fully furnished with contemporary designer pieces, the property spans two main floors plus a spacious basement.

The ground floor features a grand entrance hall, a bright open-plan kitchen with access to two Zen gardens, a stylish living room, two elegant bedrooms, a smaller room, and a luxurious family bathroom. The master suite, accessed by a private staircase, occupies part of the first floor and includes an en-suite bathroom, walk-in closet, private terrace, and storage. A guest bedroom with en-suite bathroom is located in the opposite wing upstairs.

The basement includes a laundry room, boiler room, storage, wine cellar, and a three-car garage. The home is equipped with advanced technology: a 9 kW photovoltaic system, EV charging station, underfloor heating with heat pump and boiler, infrared video surveillance, and alarm system.

Outside, the property boasts Zen gardens, olive trees, open views of hills and the Alps, a saltwater pool, heated Jacuzzi, and a BBQ patio area—perfect for outdoor dining and entertaining.

A true masterpiece of modern luxury in a peaceful, private setting.

Prezzo

€ 1.250.000

Commissione agente

3% più IVA

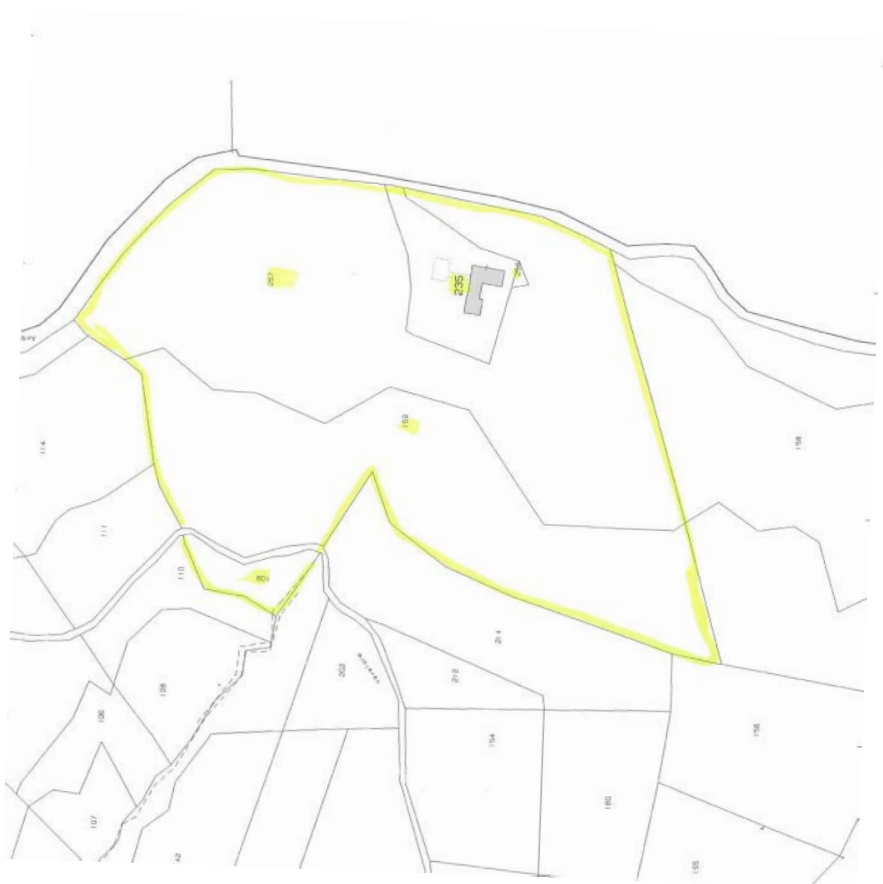
+39 3283792917

info@verdeabitare.it

Cadastral map and planimetry

Address: 15010 Cavatore AL

Latitude & longitude: 44.63078933603432, 8.453234532746606



+39 3283792917

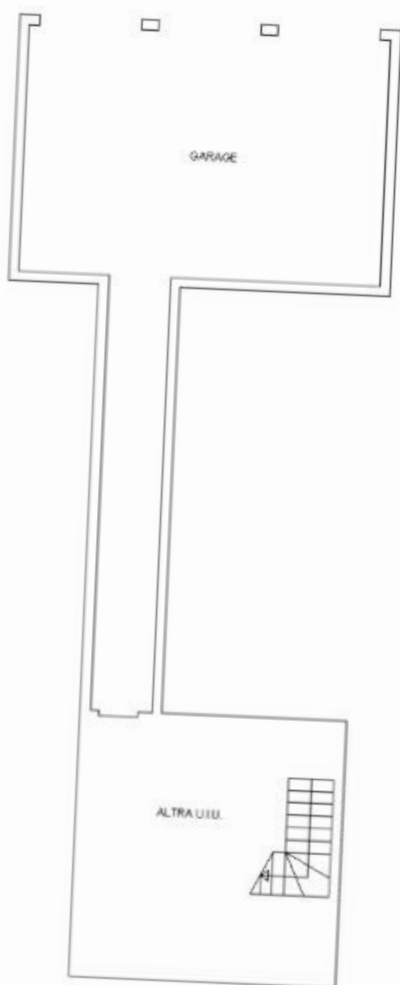
info@verdeabitare.it

Cadastral map and plan

Address: 15010 Cavatore AL

Latitude & longitude: 44.63078933603432, 8.453234532746606

PIANO INTERRATO
H:2,40



+39 3283792917

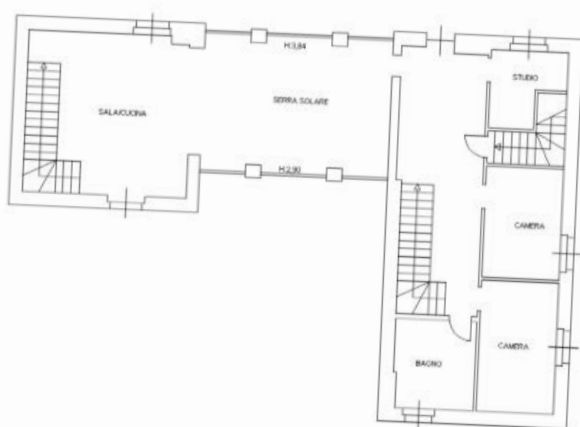
info@verdeabitare.it

Cadastral map and plan

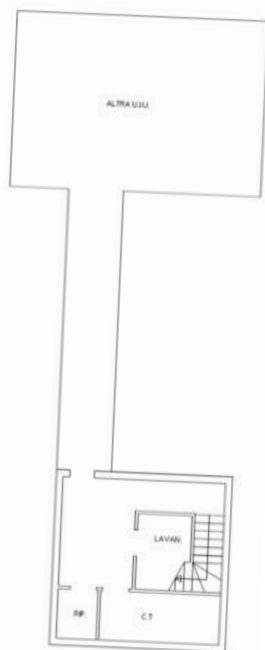
Address: 15010 Cavatore AL

Latitude & longitude: 44.63078933603432, 8.453234532746606

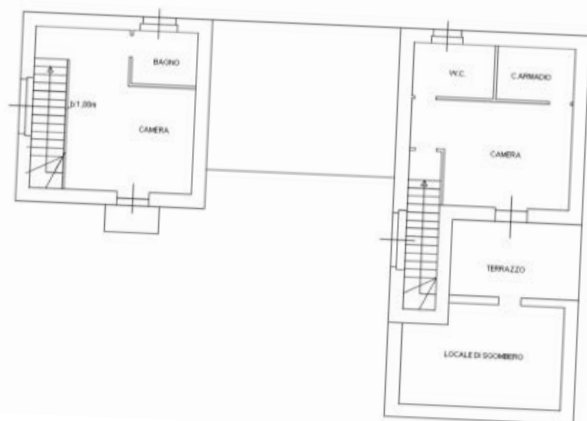
PIANO TERRA
H: 2,70m



PIANO PRIMO SOTTOSTRADA
H: 2,40



PIANO PRIMO
Hmax: 4,22m- Hmin: 3,31



N
↑

+39 3283792917

info@verdeabitare.it

Cadastral map and plan

Address: 15010 Cavatore AL

Latitude & longitude: 44.63078933603432, 8.453234532746606

