

+39 3283792917

info@verdeabitare.it

REF 499 A village house with garden and great views



Property lot size	500 m ²
Property size	306 m ²
Rooms	10
Bedrooms	3
Bathrooms	1

Other characteristics:
Balcony, basement, cellar.

More informations

In the beautiful village of Castel Rocchero, a jewel on a hill surrounded by gentle vineyards, there is a very spacious village house on two floors with an outbuilding with an underground cellar with original vaults.

The main house consists of a two storey unit with 3 bedrooms and a very spacious storage, and an ex hayloft which could be converted into further habitable rooms.

The property needs renovation, and has lots of potential. The courtyard and garden offer full privacy. There is space for a pool.

Great views from the garden! MUST SEE!

Property cost

€ 92.000

Agent commission

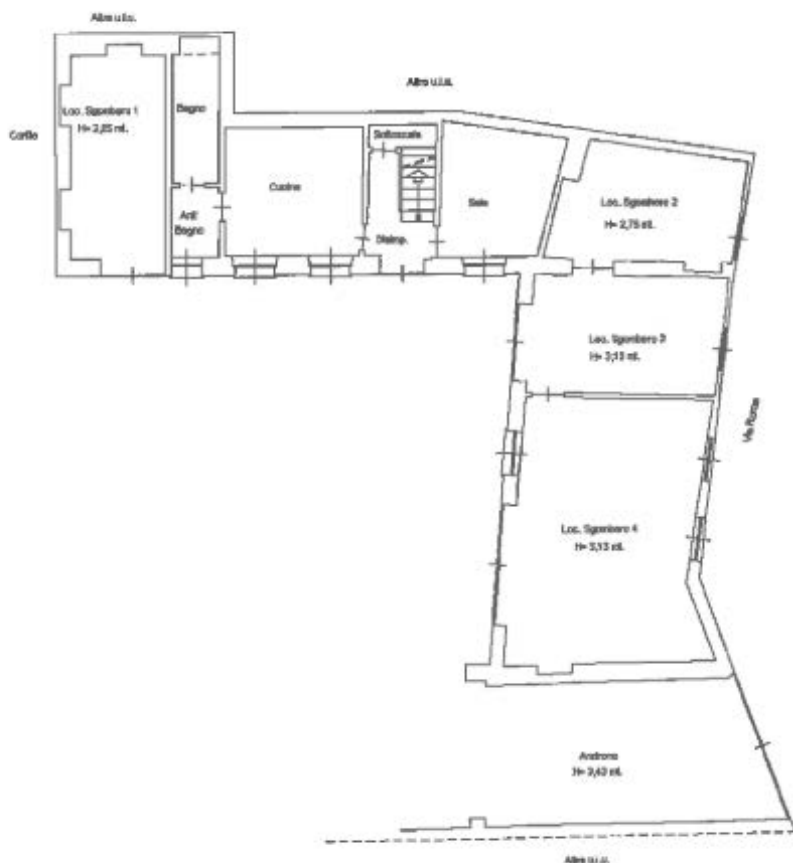
3% plus VAT

info@verdeabitare.it

Cadastral map and plan

Latitude and Longitude: 44.71855681957817, 8.414601069189825

H = 2,53 mt.



+39 3283792917

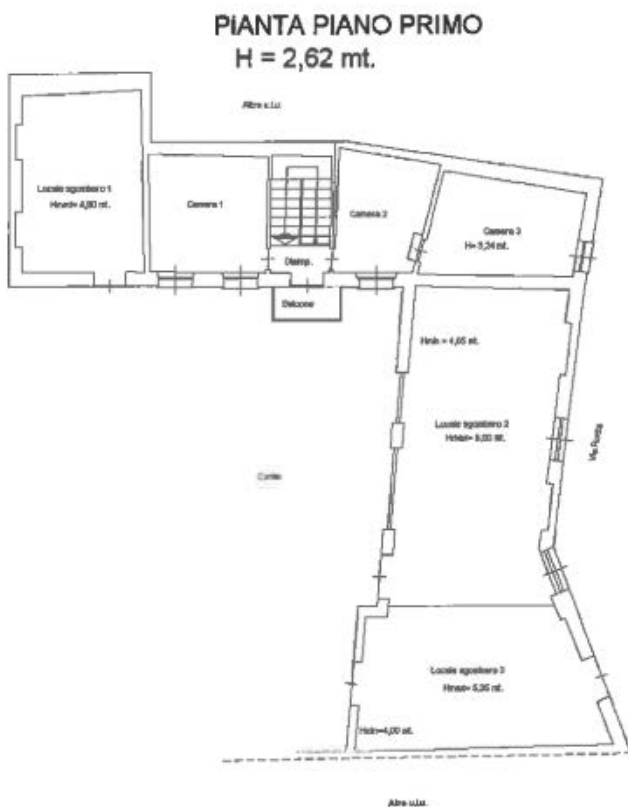
info@verdeabitare.it

Cadastral map and plan

Address:

14047 Mombercelli AT

Latitude and Longitude: 44.71855681957817, 8.414601069189825



+39 3283792917

info@verdeabitare.it

Cadastral map and plan

Address:

14047 Mombercelli AT

Latitude and Longitude: 44.71855681957817, 8.414601069189825

PIANTA PIANO SEMINTERRATO

Hmed = 2,10 mt.

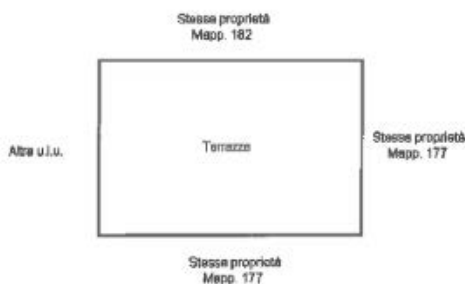


PIANTA PIANO TERRA

H = 2,40 mt.



PIANTA PIANO PRIMO



+39 3283792917

info@verdeabitare.it

Cadastral map and plan

Address:

14047 Mombercelli AT

Latitude and Longitude: 44.71855681957817, 8.414601069189825

