

+39 3283792917

info@verdeabitare.it

REF 492 A stunning property with pool and parkland, Alps views!



| | |
|---------------|--------------------|
| Property Size | 680 m ² |
| Rooms | 10 |
| Bedrooms | 4 |
| Bathrooms | 4 |

Other characteristics:
basement, cellar, pool, terrace.

More infos

Don't miss the chance to discover this magnificent country house in Conzano, surrounded by 4 hectares of grounds that include a delightful park and agricultural land. The property offers ultimate peace and privacy and features an infinity pool for relaxing, a charming guest house and a practical garage.

Key features:

Approximately 680 m² of living space on two levels, with a vaulted cellar in the basement.

The spacious living area on the ground floor includes a dining room, a living room, a fully equipped kitchen, a bathroom, utility rooms and a laundry room, all with direct access to a porch and a veranda, ideal for enjoying the fresh air and the picturesque views.

Upstairs you will find 4 bedrooms, a walk-in closet, a hallway, three bathrooms (one en-suite) and two storage rooms for maximum comfort.

A quaint guest house, spread over two floors, is perfect for accommodating guests or a janitor.

Ample garage space for 3 or 4 cars and an additional cellar perfect for storing farm equipment.

The house has been recently renovated but has been sitting unused for the last few months and could benefit from a general overhaul to bring it back to its former glory. Nonetheless, the high-quality fittings and spacious layout make this property a real gem.

Breathtaking panorama! Don't miss out on this exceptional opportunity to live amidst natural splendor, with all the luxury of a high-end residence and a stunning view of the entire Alpine chain. Contact us today to arrange a viewing and find out more about this exceptional property!

Property cost

€ 910.000

Agent commission

3% plus VAT

+39 3283792917

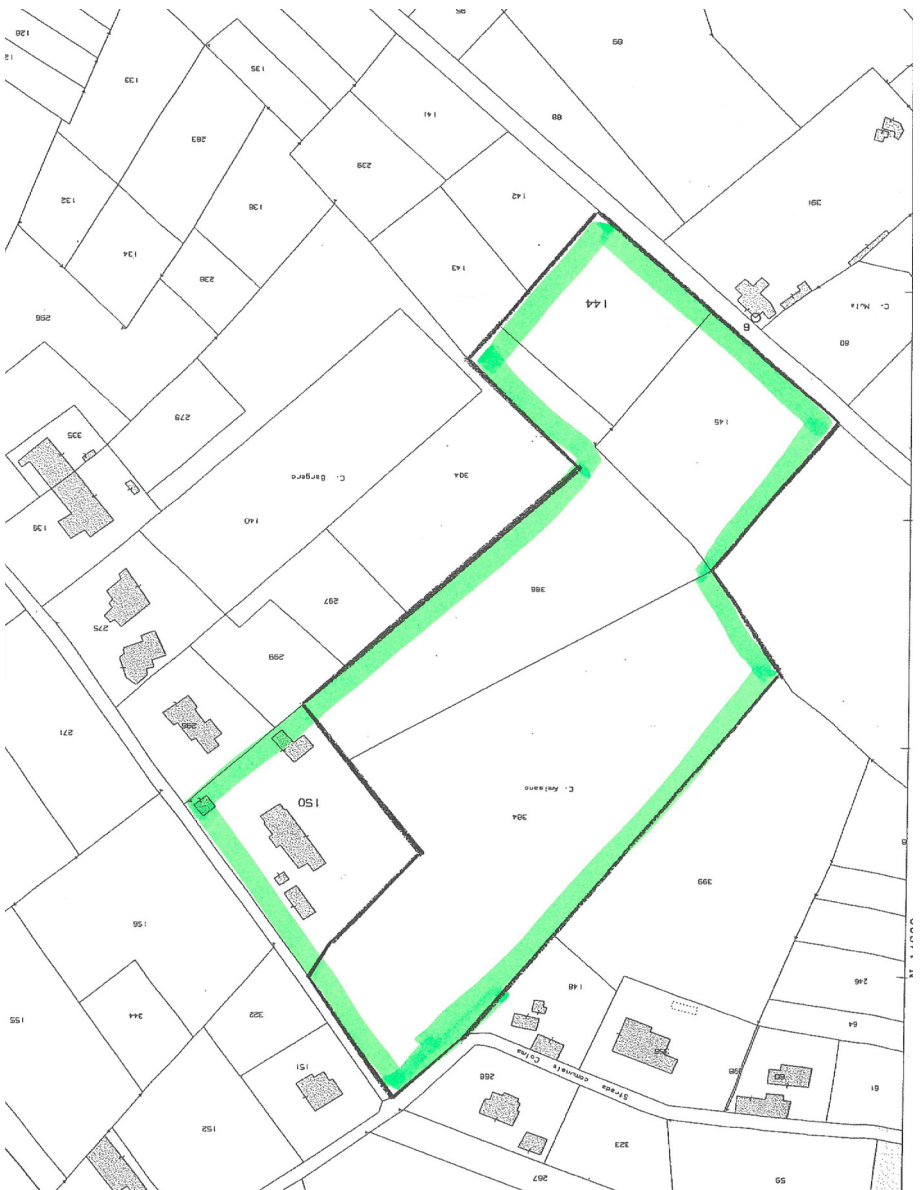
info@verdeabitare.it

Cadastral map and floor plan

Address:

15030 Conzano AT

Latitude and Longitude: 45.01982678081518, 8.455547937515831



+39 3283792917

info@verdeabitare.it

Cadastral map and floor plan

Address:

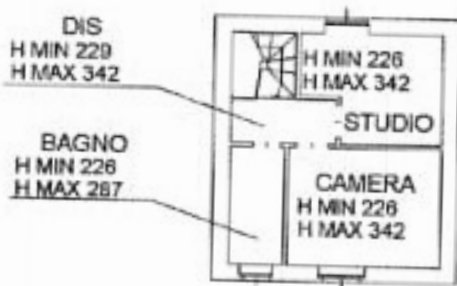
15030 Conzano AT

Latitude and Longitude: 45.01982678081518, 8.455547937515831



PIANO TERRA

H 270



PIANO PRIMO

+39 3283792917

info@verdeabitare.it

Cadastral map and floor plan

Address:

15030 Conzano AT

Latitude and Longitude: 45.01982678081518, 8.455547937515831

