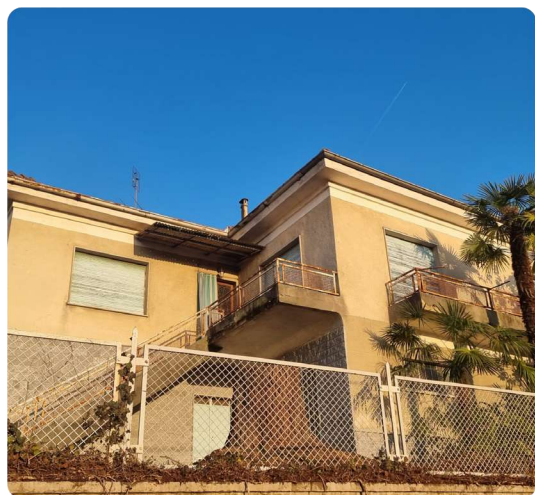


+39 3283792917

info@verdeabitare.it

REF 425 A detached villa to restore, in a panoramic location, walking distance to village



Property Lot Size	1200 m ²
Property Size	170 m ²
Rooms	17
Bedrooms	6
Bathrooms	3

Other characteristics:
balcony, cellar, attic.

More infos

A panoramic villa to restore, built in the 70s, in structural good shape, in need of interior modernization and upgrading, including new systems.

The house is very bright and airy, with a perfect exposure to sun

Basement: garage and storage/boiler room.

Upstairs: entrance, hallway, a dining room combined with a kitchen, a sitting room, a corridor, a bathroom, three bedrooms, a small staircase to the attic floor. There are two balconies and a spacious terrace too. All around a garden and ground of around 1,000 sqm

Good value for money!

Property cost

€ 150.000

Agent commission

3% plus VAT

+39 3283792917

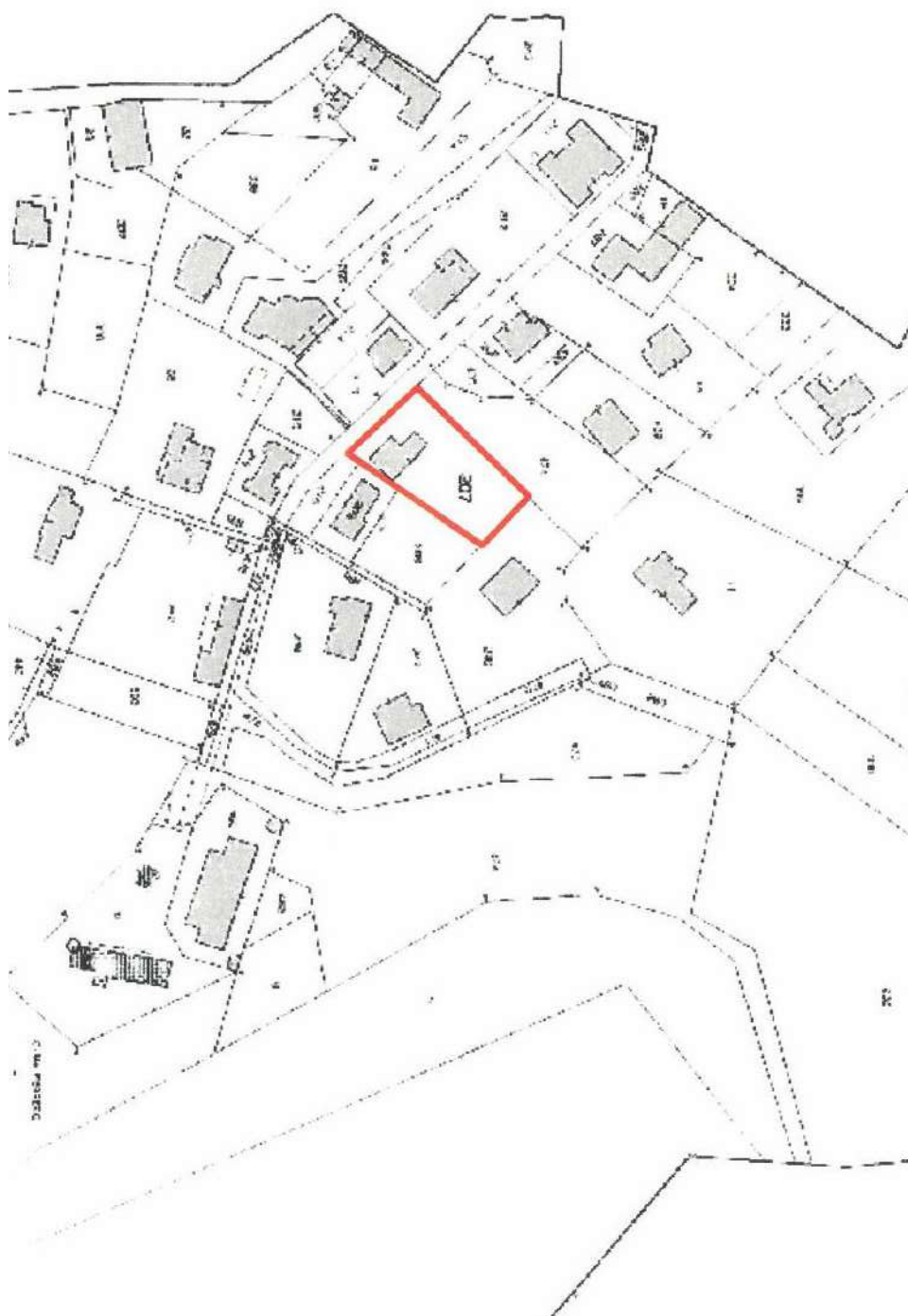
info@verdeabitare.it

Cadastral map and floor plan

Indirizzo:

14047 Mombercelli AT

Latitudine e longitudine: 44.82303237953808 | 8.293125069916512



+39 3283792917

info@verdeabitare.it

Cadastral map and floor plan

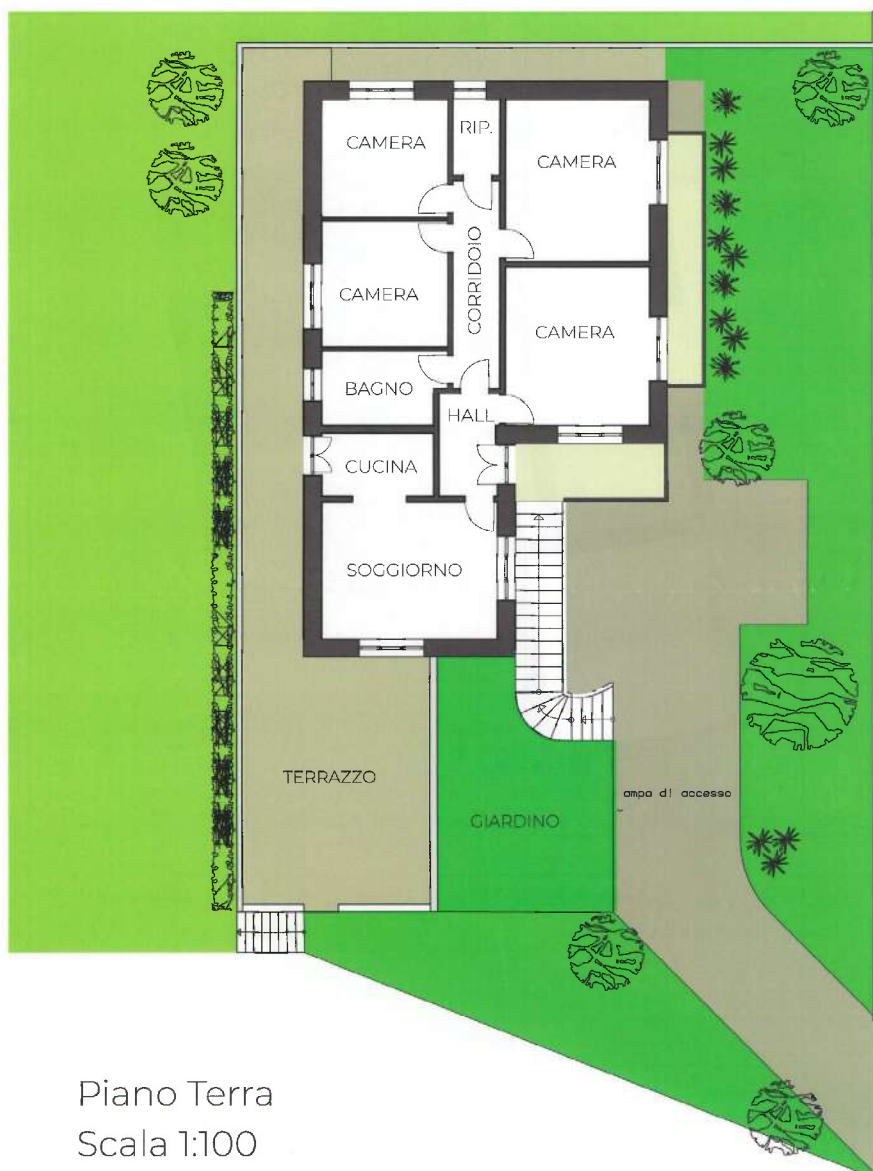
Address:

14047 Mombercelli AT

Latitude and Longitude: 44.82303237953808 | 8.293125069916512

“VILLA TERESA”

MOMBERCELLI (AT)



+39 3283792917

info@verdeabitare.it

Cadastral map and floor plan

Address:

14047 Mombercelli AT

Latitude and Longitude: 44.82303237953808 | 8.293125069916512

