

+39 3283792917

info@verdeabitare.it

REF 380 A very spacious country estate with extensive grounds



Property Lot Size	1600 m ²
Property Size	225 m ²
Rooms	10
Bedrooms	3
Bathrooms	3

Other characteristics:
balcony, attic.

More infos

A very spacious country estate, standing within its own 6,5 ha land, lawns and arable land, ideal for running a farm or horse breeding.

The property is composed of two separate buildings, the lovely L shaped main house and a very spacious stable and hayloft building. The property is within a very short distance from Nizza Monferrato, that can be reached in a few minutes drive.

The main house comprises two adjoining units, the owner's house and the maids' accomodation.

The main unit spreads on three floor levels and is in general good shape and habitable, and there are further areas that could be converted into more habitable rooms. At the moment the main unit consists of an entrance facing the staircase, a spacious kitchen with original ceilings, a lounge with cheminée, a corridor, a bathroom, a utility room, a former stable room. Upstairs four bedrooms and a spacious bathroom, plus a former hayloft. In the attic floor there are four more rooms that could be converted into habitable, with original ceilings from the 18th century. The maid's house consists of kitchen and living room on ground floor, and two bedrooms and bathroom on 1st floor, plus a garage and a storage room.

The spacious outbuilding comprises a spacious stable room, a porch and a very spacious hayloft.

Property cost

€ 150.000

Agent commission

3% plus VAT

+39 3283792917

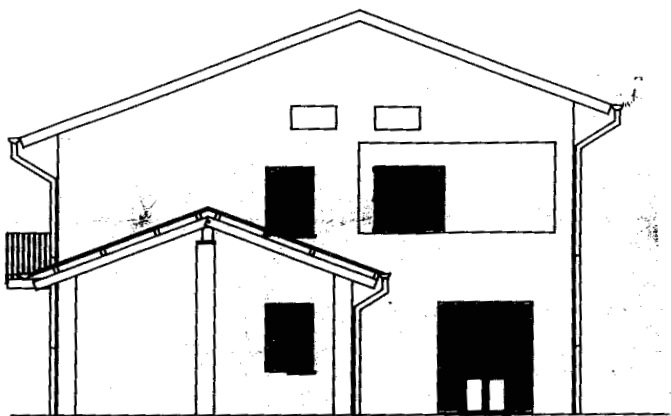
info@verdeabitare.it

Cadastral map and floor plan

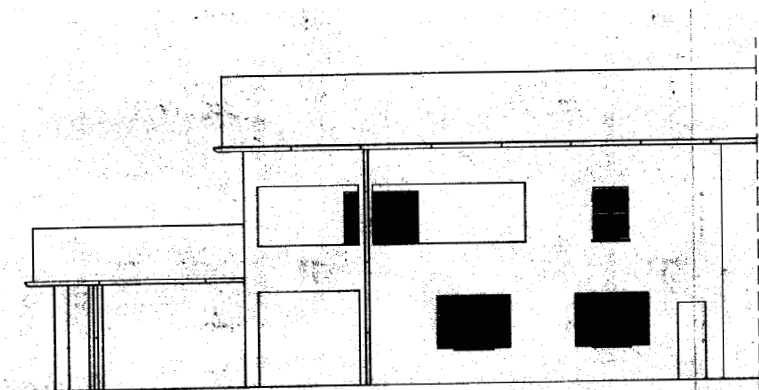
Indirizzo:

14040 Belveglio AT

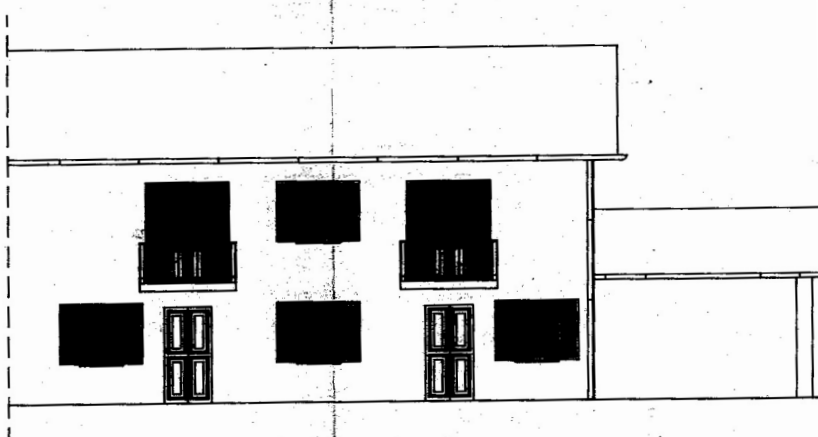
Latitude and longitude: 44.8298495 | 8.3253145



PROSPETTO EST
VARIANTE



PROSPETTO NORD
VARIANTE



PROSPETTO SUD
VARIANTE

+39 3283792917

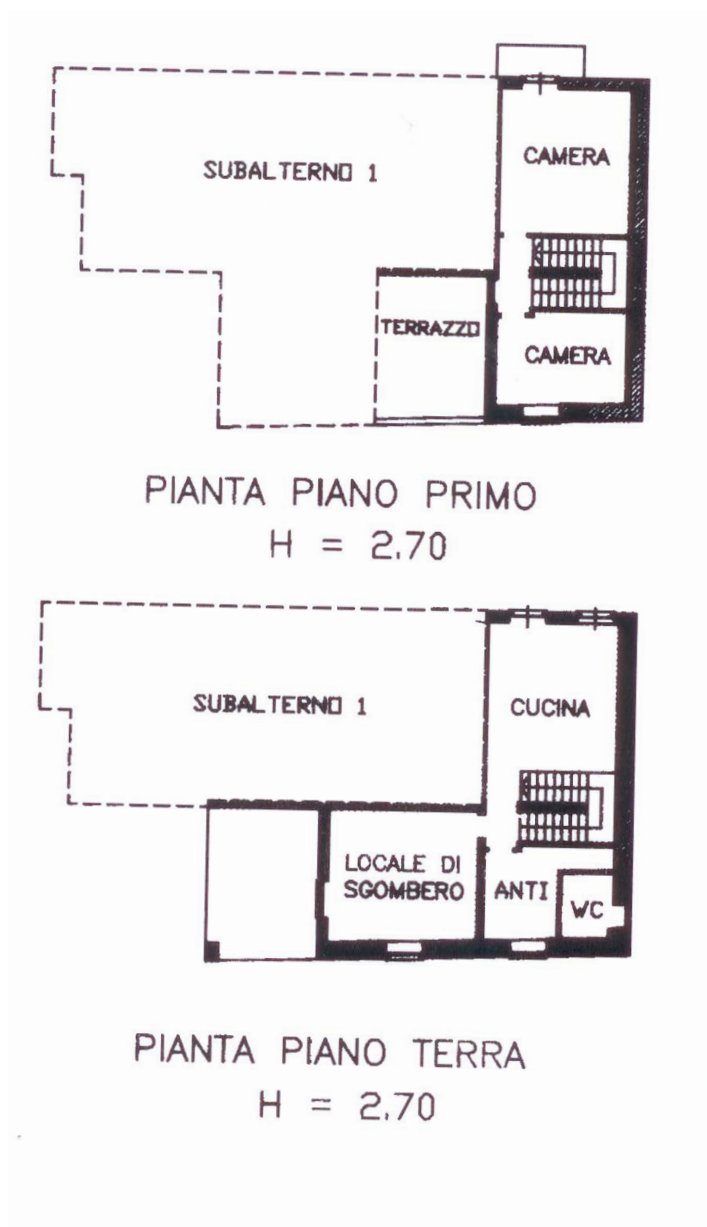
info@verdeabitare.it

Cadastral map and floor plan

Indirizzo:

14040 Belveglio AT

Latitude and longitude: 44.8298495 | 8.3253145



+39 3283792917

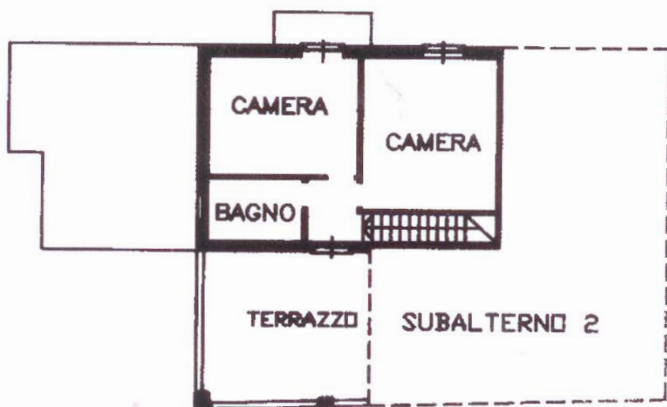
info@verdeabitare.it

Cadastral map and floor plan

Indirizzo:

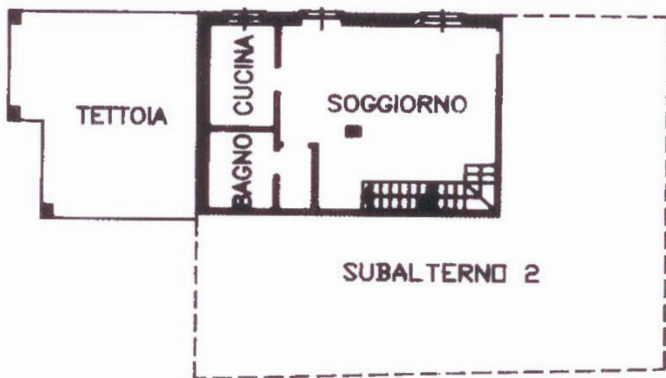
14040 Belveglio AT

Latitude and longitude: 44.8298495 | 8.3253145



PIANTA PIANO PRIMO

H = 2.70



PIANTA PIANO TERRA

H = 2.70