

+39 3283792917

info@verdeabitare.it

REF 383 Spacious 4 bed country house with terrace, garden, portico



Property Lot Size	1600 m ²
Property Size	225 m ²
Rooms	10
Bedrooms	3
Bathrooms	3

Other characteristics:
balcony, attic.

More infos

In a lovely position, at a convenient distance from the village and with nice views, for sale a semidetached property, currently composed of two adjoining yet connected units.

The house comprises two spacious porticos for al fresco dining, plus a very spacious terrace on first floor

Ground floor: two entrances, two living rooms with fireplace, a kitchen, 2 bathrooms, a utility room

Upstairs: 4 bedrooms, a bathroom, a spacious terrace. Two open staircases lead to first floor

All systems are recent, double glazed windows throughout, heating system with lpg gas

Good value for money

Property cost

€ 150.000

Agent commission

3% plus VAT

+39 3283792917

info@verdeabitare.it

Cadastral map and floor plan

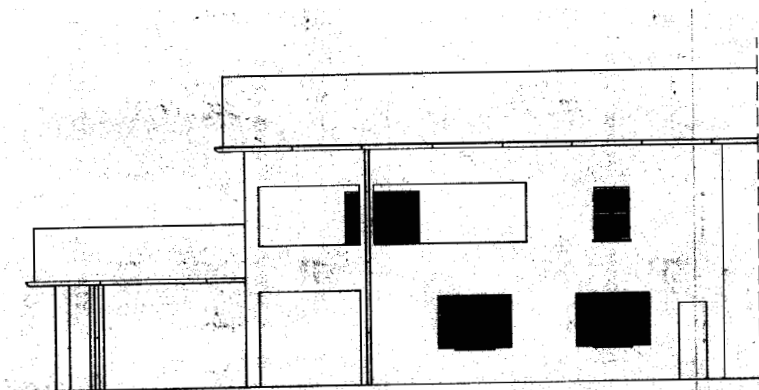
Indirizzo:

14040 Belveglio AT

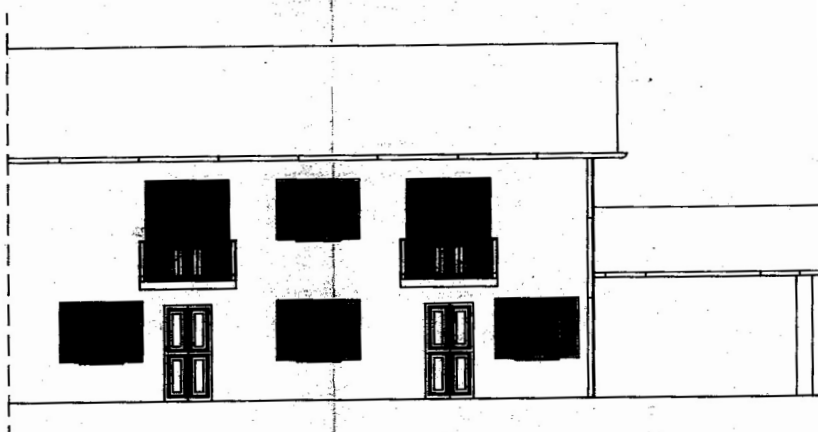
Latitude and longitude: 44.8298495 | 8.3253145



PROSPETTO EST
VARIANTE



PROSPETTO NORD
VARIANTE



PROSPETTO SUD
VARIANTE

+39 3283792917

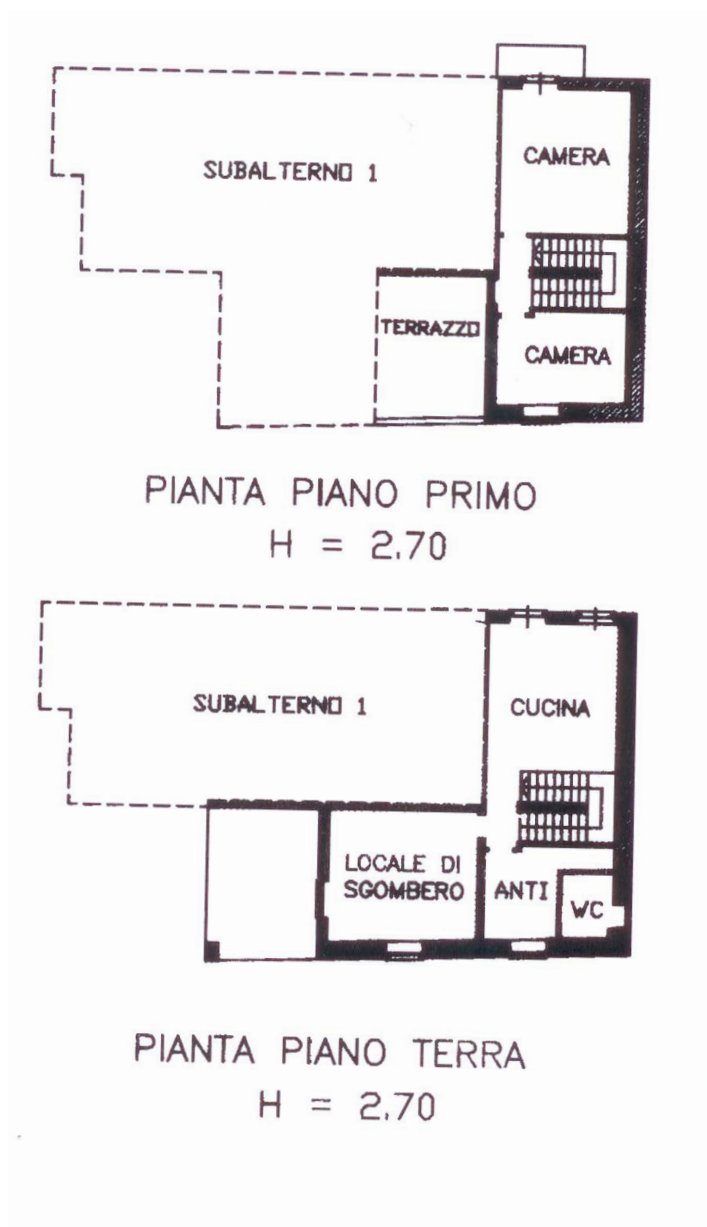
info@verdeabitare.it

Cadastral map and floor plan

Indirizzo:

14040 Belveglio AT

Latitude and longitude: 44.8298495 | 8.3253145



+39 3283792917

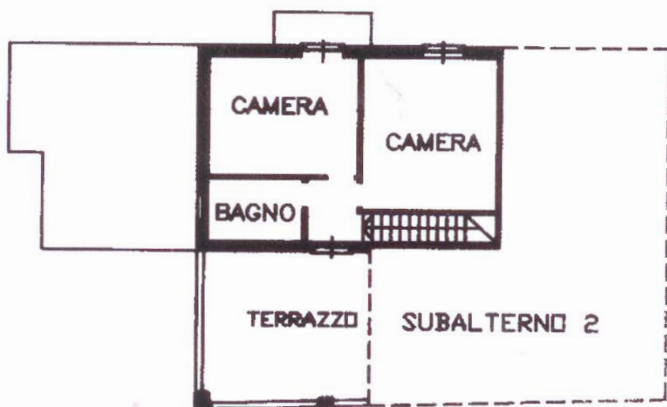
info@verdeabitare.it

Cadastral map and floor plan

Indirizzo:

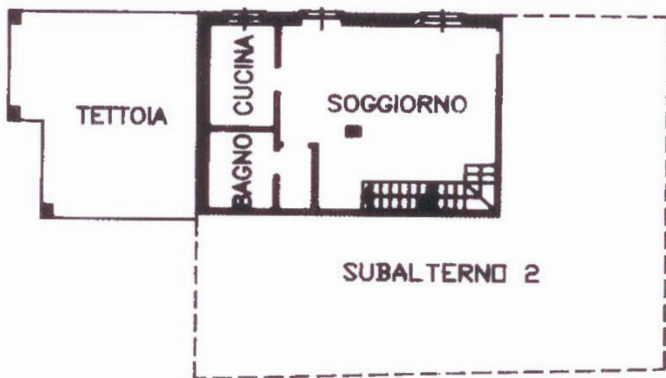
14040 Belveglio AT

Latitude and longitude: 44.8298495 | 8.3253145



PIANTA PIANO PRIMO

H = 2.70



PIANTA PIANO TERRA

H = 2.70